

BEEF
in
the BUFF

**34TH ANNUAL
O'BRIEN FARMS**

BULL SALE

Working Cattle - Without Clothes!

RANGE CALVED :: RANGE RAISED :: CALVING EASE

SUNDAY :: FEBRUARY 27

1:30 PM



Registered Quarter Horses • Limousin Cattle
**O'BRIEN
FARMS**
A TRUSTED LIMOUSIN SEEDSTOCK SOURCE SINCE 1971
WWW.OBRIENFARMS.COM

WELCOME TO THE 34th ANNUAL O'BRIEN FARMS **LIMOUSIN BULL SALE**

SUNDAY - FEBRUARY 27 , 2011 - 1:30 PM.

Jane, MO - O'Brien Farms Sale Pavilion

Sale Day Phone: 417-226-3063

Complimentary Lunch on Sale Day served at 11:30 a.m.

SELLING

80 SERVICE READY LIMOUSIN BULLS!
20 HEAD - 2 YEAR OLD LIMOUSIN BULLS
4 - 2 YEAR OLD ANGUS BULLS
26 HEAD - LIMOUSIN FALL YEARLINGS
22 HEAD - LIMOUSIN SPRING YEARLINGS
10 HEAD - ANGUS SPRING YEARLINGS

BULLS WILL BE WORMED & SEMEN TESTED - WE STAND BEHIND THEM 100%

AUCTIONEER: BRUCE BROOKS 580-276-5137 • 580-695-2036 (MOBILE)

SALE REPRESENTATIVE: KENNY WHITE 918-314-9264

RING MEN:

MARK SMITH • JESSE BOLIN • DENNIS BOLIN

Don O'Brien
P.O. Box 734
Pineville, MO 64856
Hm 417-436-2568
Office 417-223-4391
Fax 417-223-4393



Call Day or Night:
Jason O'Brien
Mobile 417-437-8942
Mindy O'Brien
Mobile 417-389-2593

North Missouri Division Milon, MO
Dale & Lynn Gray
660-265-3355

Professional Livestock Insurance



Mark and Deidre Smith
2511 NE 99th Place • Ankeny, Iowa 50021
Phone/Fax: 515/965-1458
Mobile: 515/229-5227
E-Mail: GRGenetics@aol.com



Representing
American
Live Stock
Insurance Co.

Registered Quarter Horses - Limousin Cattle
Blackmouth Cur Dogs

VISIT OUR WEBSITE:
www.obrienfarms.com
Email: pontrail@olemac.net

CATALOG PREPARED BY MINDY O'BRIEN
PRINTED BY FOUR STATE PRINTING, INC.

O'BRIEN FARMS



Howdy O'Brien Farms would like to welcome you to the 34th annual bull sale on February 27, 2011 at 1:30 p.m. at the O'Brien Farms Sale Pavilion just south of Jane, Mo. on the west side of hwy 71. We would like to welcome everybody to the ranch anytime to view the bulls and the way we develop them. They are not pampered cattle they have to be the kind that comes little when they are born get right up stand and suck from the day on they have to grow. At weaning we are critical on them for disposition, testical, weaning weights, birth weights, structure, correctness, and soundness. They have to meet all these guidelines before we offer them to you all the consumers that we have loved to sell bulls to for the last 34 years. A strong tradition that has made many improvements in the herds and made them money. Milk and Muscle are profit.

With all that said let us tell you about how we develop our heifers. From the time they are weaned until the time their first calf hits the ground they have had about 4 weeks worth of feed. They are developed on high feed rations that are unnatural for them. I have strived for years to bring you all the natural bull. And to get that natural bull you have to have a natural female. She needs to be the kind that from the day you kick her out on green pastures to the day she has her umptenth calf for you she has to do it here in the ozark grasses which we have a lot of. Keep in mind that there is lots of rocks to go along with the grasses. So she has to be sound. We have lots of briars, and the stick-

Back to the bulls they have been developed in the big Ozark hills just like we have for 40 years all the bulls are big long bodied, deep ribbed, big footed soggy made cow breeding machines. Their are low birth weight bulls lots of double polled and double black bulls. And for those of us that still like the red bulls, they are my favorite. As you go through these bulls study the epd's and the performance records. We strive to keep them up to date for you the customer we want you SATISFIED. These bulls are very docile. We let the kids gentle them down. Roper and Tate walk them about every day and that really keeps them docile. But if they aren't gentle around our kids its only a 1 way street.

The cattle industry has had a remarkable year and with the way the cow numbers are down I think it is going to stay pretty good for a long time. They are really liking these limousin and limflex bulls like always, they grow fast and kill quicker. They are leaner which the American people love today. When the housewife buys a steak or hamburger today. She doesn't want to buy all that fat. For two reasons the first is fat cooks up but meat doesn't and second is the nutritional reasons. With that in mind that really makes us here at O'Brien Farms smile. At O'Brien Farms these bulls will work for you in the pasture and when you have used them as long as you can and it is time to sell them. They will probable bring more than the day you brought them.

The bulls are available for viewing at anytime day or night. We have spotlights and will show them after dark. Bulls will be available at the sale barn Friday Feb 25. Hey don't be bashful about stopping one of us and asking about the bulls.

Sincerely
Don and Jason O'Brien and Families

O'BRIEN'S WIMPY

88% DOUBLE PLD/DOUBLE BLK 6-1-09
 10 927 W NXM1955712 NO. 1

BR BLACK MARK { EXLR DAKOTA { WULFS COUNT DOWN 9251C
 CANE RIDGE DAPHNE 011D
 DUUG GLITTER { WULFS QUARTERBACK 4222B
 CL GLITTER
 O'BRIEN'S 5093R { WULFS MONITOR { WULFS KLINT 5874K
 MISS WULFETTE 8015H
 O'BIRENS 2004M { WULFS JUMP SHOT 3519J

BW	WW	YW	MA	CEM	SC	BTH	WNG	YLG	UREA	UFAT	UMF
4.4	43	78	18	1	0.4	85	660	1310	.66	-.19	-.07

Wimpy has a big chance of being homo black and homo polled. He ranks in the top 10% for REA and YG. Just a 3/4 blood bull but clocked plum full of red meat.

O'BRIEN'S WINDOWS VISTA

88% POLLED/RED 5-1-09
 10 902 W NXM1955684 NO. 2

WULFS KLAYTON { WULFS HARD CORE { WULFS FRANCHISE 2443F
 MISS WOLFETTE 1111A
 MISS WULFETTE { WULFS EXPLOSION 0184E
 MISS WOLFETTE 4145S
 O'BRIEN'S 4162P { LFL 701G { COLE FIRST DOWN 46D
 CHR COURTNEY 208C
 O'BRIEN'S 2042M { TUBB EIGHTBALL 693E

BW	WW	YW	MA	CEM	SC	BTH	WNG	YLG	UREA	UFAT	UMF
2.0	40	76	22	4	-0.1	79	646	1275	.52	-.16	-.07

Top 40% in MA,CEM, REA - Top 20% YG. Very long patterned bull. Big footed very structurally sound. If you like the red ones you will love this one

O'BRIEN'S WADE

88% SCURRED/RED 4-28-09
 10 904 W NXM1948261 NO. 3

BR BLACK MARK { EXLR DAKOTA { WULFS COUNT DOWN 9251C
 CANE RIDGE DAPHNE 011D
 DUUG GLITTER { WULFS QUARTERBACK 4222B
 CL GLITTER
 O'BRIEN'S 5088R { WULFS MONITOR { WULFS KLINT 5874K
 MISS WULFETTE 8015H
 O'BRIEN'S 2001M { WULFS JUMP SHOT 3519J

BW	WW	YW	MA	CEM	SC	BTH	WNG	YLG	UREA	UFAT	UMF
3.1	37	71	16	1	0.3	74	630	1350	.59	-.17	-.06

Good Bull. If you come to buy a show bull this one would for sure get you the purple ribbons. Good fronted long as a well rope. Very square thick topped and moves like he is on cloud nine. Ranks in the top 10% YG and top 30% for REA

O'BRIEN'S WASTED

75% POLLED/DOUBLE BLK 5-29-09
 10 921 W LFM1955708 NO. 4

WULFS KLAYTON { WULFS HARD CORE { WULFS FRANCHISE 2443F
 MISS WOLFETTE 1111A
 MISS WULFETTE { WULFS EXPLOSION 0184E
 MISS WOLFETTE 4145S
 O'BRIEN'S 520L { HCC BLK MUSTANG { CHR BLAC MUSTANG
 3M MUSTANG 432D
 FOUNDATION COW {

BW	WW	YW	MA	CEM	SC	BTH	WNG	YLG	UREA	UFAT	UMF
1.4	38	74	19	2		75	651	1325	.60	-.21	-.09

Top 30% for REA - Top 4% for Year Grade. Wasted is a very deep bodied bull.

O'BRIEN'S WESTON

9008 W ANGUS 3-29-09
 AAA16525525 NO. 5

OFF P3 640 { KCF BENNETT 208 P3 { BON VIEW NEW DESIGN 208
 KCR MISS RELIANT M109
 OAK FRONT ERICA ANN 14 { N BAR PRIME RATE
 OAK FRONT ERICA ANN 62
 OAK FRONT COPELAND 325 { DIAMOND DAMBUSH { ROCKN D AMBUSH 1531
 DIAMOND JANNET H909
 OAK FRONT COPELAND D294 { N BAR PRIME RATE
 OAK FRONT 342 COPELAND 294

BW	WW	YW	MA	CEM	SC	BTH	WNG	YLG	UREA	UFAT	UMF
						80	635	1158			

I don't know much about Angus bulls but this one is a great one.



O'BRIEN'S WALRUS

75% DOUBLE BLD/DOUBLE BLK 10-5-09
 IO 1924 W NXM1974461

NO. **6**

KING WULF 2003P { WULFS MONEYBAGS { WULFS FANFARE 4055F
 WULFS 24 KARAT GOLD 003K
 WULFS MANAGEMENT { WULFS POLLED PROGRESS
 WULFS KONCORDIA 0081K
 O'BRIEN'S 2017M { LFL 701G { COLE FIRST DOWN 46D
 CHR COURTNEY 208C
 FOUNDATION COW {



BW	WW	YW	MA	CEM	SC	BTH	WNG	YLG	UREA	UFAT	UMF
0.8	30	63	26	4	0.4	76	680	1347	.33	-.11	-.09

Walrus is the kind. A bull like this at wulfs would be worth a pretty penny don't miss him. Double Black. Double Polled.
 Top 20% in BW and MA - Top 30% in YG - Top 40% in CEM and SC
 Could be used on heifers and total outcross.

O'BRIEN'S WIDE LOAD

75% DOUBLE PLD/BLK 9-1-09
 IO 1910 W NXM1974480

NO. **7**

JCL JACK FROST { EXLR DAKOTA { WULFS COUNT DOWN 9251C
 CANE RIDGE DAPHNE 011D
 JCL ETERNITY { JCL BLACK OUT
 ROKR DIAMONDS ARE FOREVER
 O'BRIEN'S 304K { LFL 701G { COLE FIRST DOWN 46D
 CHR COURTNEY 208C
 FOUNDATION COW {

BW	WW	YW	MA	CEM	SC	BTH	WNG	YLG	UREA	UFAT	UMF
3.3	44	79	18	2	0.5	84	650	1326	.33	-.13	-.08

Top 20% of Breed for yield grade. Top 40% of Breed for WW, YW, SC
 Big framed bull that should work great on a set of moderate framed cows.

*Milk & Muscle
 are Profit!*

O'BRIEN'S WIPEOUT

50% POLLED/RED 7-5-09
 IO 1923 W NXM1975220

NO. **8**

O'BRIEN'S TEXAS RANGER { JCL JACK FROST { EXLR DAKOTA 353G
 JCL ETERNITY
 IO MISS DIAMOND 142E { DIAMOND TIME 953Y
 MS IO POLL CAT 830W
 FOUNDATION COW 606S { GOLD STRIKE {



BW	WW	YW	MA	CEM	SC	BTH	WNG	YLG	UREA	UFAT	UMF
						80	675	1325			

Showed by Roper at Country Fair has won the blue ribbons.
 Super gentle.

O'BRIEN'S XPRESS YOURSELF

88% SCURRED/BLK 1-21-10
 IO 0746 X NXM1974875 NO. **12**

WULFS ROUGH N READY { WULFS JOEL { WULFS GUARDIAN 5074G
 MISS WULFETTE 6010F
 WULFS JOY BELLS { WULFS EVAN 9052E
 WULFS ENJOYABLE 5009E
 O'BRIEN'S 2024M { WULFS KELLER { AUTO HACKETT 702H
 WULFS GLAD TIDINGS 7516G
 O'BRIEN'S 347K { LFL 701G

BW	WW	YW	MA	CEM	SC	BTH	WNG	YLG	UREA	UFAT	UMF
3.3	44	82	25	3	0.4	80	725		.52	-.17	-.04

Top 10% of breed for YG - Top 20% \$ REA - Top 30% for Milk - Top 40% YW
 0746X has a great cowside pedigree.

O'BRIEN'S XABRINA

63% HORNED/DOUBLE BLK 5-3-10
 IO 0710 X NXM1974422 NO. **13**

O'BRIEN'S RESTAURANT { GOLD STRIKE { AUTO CLIFF HANGER 194D
 OAKM LADY SANDRA 631F
 O'BRIENS 2017M { LFL 701G
 O'BRIEN'S 307K { LFL 701G { COLE FIRST DOWN 46D
 CHR COURTNEY 208C
 FOUNDATION COW {

BW	WW	YW	MA	CEM	SC	BTH	WNG	YLG	UREA	UFAT	UMF
1.4	36	64	23	4	0.2	81	570		.37	-.06	-.05

Top 40% of the breed for CED, BW, Milk, Double Blk.

O'BRIEN'S XPRESSWAY

95X ANGUS 4-15-10
 AAA16848832 NO. **14**

G A R YIELD GRADE { G A R PRECISION { TEHAMA BANDO 155
 1680 9J9 G A R 856
 G A R EXT 4526 { N BAR EMULATION EXT
 G A R 6807 TRAVELER 93
 PAA QUEEN G1 { PAA BOB D49 { BASIN MAX 602C
 PAA MERIT QUEEN 9509
 PAA QUEEN D96 { IRONWOOD 9399 6370 1384
 PA 5003 QUEEN 1157

BW	WW	YW	MA	CEM	SC	BTH	WNG	YLG	UREA	UFAT	UMF
+1.9	+49	+95	+21	+8		55	643				

O'BRIEN'S XTRA FLAVOR

99X ANGUS 3-3-10
 AAA1688837 NO. **15**

G A R YIELD GRADE { G A R PRECISION { TEHAMA BANDO 155
 1680 9J9 G A R 856
 G A R EXT 4526 { N BAR EMULATION EXT
 G A R 6807 TRAVELER 93
 OAK FRONT ERICA ANN 62 { DIAMOND AMBUSH { ROCKN D AMBUST 1531
 DIAMOND JANNET H909
 OAK FRONT ERICA ANN 458 { N BAR JUSRITE 4324A
 OAK FRONT ERICA ANNE 458

BW	WW	YW	MA	CEM	SC	BTH	WNG	YLG	UREA	UFAT	UMF
-.9	+40	+81	+18	+13		45	561		28	-.024	.42

O'BRIEN'S XPLOSION

93X ANGUS 5-1-10
 AAA16844194 NO. **16**

RR CORKS TRAV 004 { S A V 8180 TRAVELER { SITZ TRAVELER 8180
 BOYD FOREVER LADY 8003
 CORKS ELGA ERICA { TWIN VALLEY PRECISION E161
 CORKS ELGA ERICA 8104
 PAA MADINA ELBA E18 { PAA NEW DESIGN { B/R NEW DESIGN 036
 PAA BHAWK 1093 ANN 4153
 PAA MADINA ELBA C34 { N BAR EMULATION EXT
 HIGH POINT MADINA ELBA W04

BW	WW	YW	MA	CEM	SC	BTH	WNG	YLG	UREA	UFAT	UMF
1+2.0	1+50	87	1+24	9		53	611				

O'BRIEN'S WASTED

96X ANGUS 4-15-10
 AAA16848832 NO. **17**

G A R YIELD GRADE { G A R PRECISION { TEHAMA BANDO 155
 1680 9J9 G A R 856
 G A R EXT 4526 { N BAR EMULATION EXT
 G A R 6807 TRAVELER 93
 OAK FRONT BLACKBIRD { SCHURRTOP GLOBALFRONT { SCHURRTOP GLOBAL
 SCHURRTOP WL 527 3000
 OAK FRONT BLACKBRID 302 { FINKS 8285 OF 4168 6148
 OAK FRONT BLACKBIRD C202

BW	WW	YW	MA	CEM	SC	BTH	WNG	YLG	UREA	UFAT	UMF
+1.0	+44	+90	+16	+9		50	524				

TWO YEAR OLDS

O'BRIEN'S WESTERN

9019W ANGUS 5-2-09
AAA16542176 NO.

18

OFF P3 640 { KCF BENNETT 208 P3 { BON VIEW NEW DESIGN 208
KCR MISS RELIANT M109
OAK FRONT ERICA ANN 14 { N BAR PRIME RATE
OAK FRONT ERICA ANN 62
OAK FRONT ERICA ANN 14 { N BAR PRIME RATE
GARDENS PRIME TIME
N BAR ENCHANTRESS T330
OAK FRONT ERICA ANN 62 { DIAMOND AMBUSH 866K
OAK FRONT ERICA ANN A 458

BW	WW	YW	MA	CEM	SC	BTH	WNG	YLG	UREA	UFAT	UMF
1.8	34	66	.19	9		65	475	975			

O'BRIEN'S WINSTON

9013W ANGUS 3-14-09
AAA16525530 NO.

19

OFF P3 640 { KCF BENNETT 208 P3 { BON VIEW NEW DESIGN 208
KCR MISS RELIANT M109
OAK FRONT ERICA ANN 14 { N BAR PRIME RATE
OAK FRONT ERICA ANN 62
OAK FRONT BLACKMERE 793 { O F F JURRITE 0646 { N BAR JURRITE 4324A
OAK FRONT COPELAND B646
OAK FRONT BLACKMERE 261 { GARDENS EXT 7137 S1
OAK FRONT BLACKMERE C265

BW	WW	YW	MA	CEM	SC	BTH	WNG	YLG	UREA	UFAT	UMF
2.6	41	70	25	5		76	650	1270			

O'BRIEN'S WILSON

9010W ANGUS 3-28-09
AAA16525527 NO.

20

OFF P3 640 { KCF BENNETT 208 P3 { BON VIEW NEW DESIGN 208
KCR MISS RELIANT M109
OAK FRONT ERICA ANN 14 { N BAR PRIME RATE
OAK FRONT ERICA ANN 62
PAA EMPRESS D11 { PAA NORTH-LANDER 102
MEREDITH NORTHALNDER 102
PAA EXECUTIVE CHALLENGER2101
PAA EMPRESS 5122 { PAA DRAWBAR 3047
MI ELBA EMPRESS 904-1841-54N

BW	WW	YW	MA	CEM	SC	BTH	WNG	YLG	UREA	UFAT	UMF
1.9	42	73	20	6		74	625	1200			

O'BRIEN'S WELDER

75% POLLED/DOUBLE BLK 5-26-09
10 905 W NXM1955694 NO.

21

BR BLACK MARK { EXLR DAKOTA { WULFS COUNT DOWN 9251C
CANE RIDGE DAPHNE 011D
DUGG GLITTER { WULFS QUARTERBACK 4222B
CL GLITTER
O'BRIEN'S 5003R { WULFS JETHRO { TUBB GRINDER 749D
MISS WULFETTE 7209G
FOUNDATION COW {

BW	WW	YW	MA	CEM	SC	BTH	WNG	YLG	UREA	UFAT	UMF
1.7	32	63	17	3		80	621	1225			

O'BRIEN'S WEEPING WILLOW

75% DOUBLE PLD/BLK 5-30-09
 IO 919 W NXM1955707 NO. 22

BR BLACK MARK { EXLR DAKOTA { WULFS COUNT DOWN 9251C
 CANE RIDGE DAPHNE 011D
 DUUG GLITTER { WULFS QUARTERBACK 4222B
 CL GLITTER

O'BRIEN'S 5015R { WULFS LEPRECHAN { PLND JEOPARDY 203J
 WULFS JOANNA 9369J
 FOUNDATION COW {

BW	WW	YW	MA	CEM	SC	BTH	WNG	YLG	UREA	UFAT	UMF
2.4	37	68	15	3	0.3	75	641	1275			

O'BRIEN'S WELCOME MAT

94% POLLED/BLK 3-10-09
 IO 942 W NPM1955681 NO. 23

WULFS ROUGH N READY { WULFS JOEL { WULFS GUARDIAN 5074G
 MISS WULFETTE 6010F
 WULFS JOY BELLS { WULFS EVAN 9052E
 WULFS ENJOYABLE 5009E

O'BRIEN'S 4107P { DUGG MISSISSIPPI { DVFC COOKIE MONSTER 108H
 FERF MISS BP TD OLY 617F
 O'BRIEN'S 2031M { LFL 701G
 O'BRIEN'S 319K

BW	WW	YW	MA	CEM	SC	BTH	WNG	YLG	UREA	UFAT	UMF
3.2	41	79	25	4	0.4	75	627	1300	.44	-.11	-.01

Top 20% of Breed for milk.

O'BRIEN'S WILHELM

100% POLLED/BLK 4-1-09
 IO 943 W NPM1974400 NO. 24

BR BLACK MARK { EXLR DAKOTA { WULFS COUNT DOWN 9251C
 CANE RIDGE DAPHNE 011D
 DUUG GLITTER { WULFS QUARTERBACK 4222B
 CL GLITTER

O'BRIEN'S 5077R { HCC BLK MUSTANG { CHR BLACK MUSTANG
 3M MISS STRETCH 182U
 O'BRIEN'S 459L { ROUSSEAU
 BR CHEERLEADER

BW	WW	YW	MA	CEM	SC	BTH	WNG	YLG	UREA	UFAT	UMF
4.4	33	67	14	1	0.1	82	575	1100	.52	-.17	-.14

Good Bull.

O'BRIEN'S WONDER BOY

100% SCURRED/BLK 4-10-09
 IO 916 W NPM1955706 NO. 25

WULFS ROUGH N READY { WULFS JOEL { WULFS GUARDIAN 5074G
 MISS WULFETTE 6010F
 WULFS JOY BELLS { WULFS EVAN 9052E
 WULFS ENJOYABLE 5009E

O'BRIEN'S 502L { WULFS JOHNNY APPLESEED { WULFS GAGE 5158G
 WULFS LADY 2048B
 LA BLACKROSE { IBRR BLACK SHADOW
 DBRO PRIMROSE 075W

BW	WW	YW	MA	CEM	SC	BTH	WNG	YLG	UREA	UFAT	UMF
3.0	42	80	24	0	0.5	79	599	1150	.55	-.07	-.06

Good Bull. Top 50% of Bred WW and YW
 Top 30% of breed for milk and REA and CW - Top 40% for yield grade

O'BRIEN'S WESTERN WISHES

50% SCURRED/DBL BLK 4-21-09
 IO 906 W NXM1974402 NO. 26

BR BLACK MARK { EXLR DAKOTA { WULFS COUNT DOWN 9251C
 CANE RIDGE DAPHNE 011D
 DUUG GLITTER { WULFS QUARTERBACK 4222B
 CL GLITTER

FC 8000 3/4 LIMOUSIN 1/4 LONGHORN {

BW	WW	YW	MA	CEM	SC	BTH	WNG	YLG	UREA	UFAT	UMF
						71	690	1300			

O'BRIEN'S WIMBELDON

75% HORNED/DOUBLE BLK 5-22-09
 IO 933 W NXM1974397 NO. 27

BR BLACK MARK { EXLR DAKOTA { WULFS COUNT DOWN 9251C
 CANE RIDGE DAPHNE 011D
 DUUG GLITTER { WULFS QUARTERBACK 4222B
 CL GLITTER

O'BRIEN'S 5006R { WULF JETHRO { TUBB GRINDER 749D
 MISS WULFETTE 7209G
 FOUNDATION COW {

BW	WW	YW	MA	CEM	SC	BTH	WNG	YLG	UREA	UFAT	UMF
2.2	35	67	17	3	0.2	75	550	1000			

O'BRIEN'S WHITEHILL

88%
10 947 W

POLLED/BLK

5-21-09
NCM1974401

NO. **28**

WULFS
KLAYTON

WULFS
HARD-CORE
MISS WULFETTE

WULFS FRANCHISE 2443F
MISS WOLFETTE 1111A

WULFS EXPLOSION 0184E
MISS WOLFETTE 4145S

O'BRIEN'S
7024T

GOLD STRIKE
O'BRIEN'S 2078M

AUTO CLIFF HANGER 194D
OAKM LADY SANDRA 631F
WULFS HONDA 5070H

BW	WW	YW	MA	CEM	SC	BTH	WNG	YLG	UREA	UFAT	UMF
2.2	41	76	21	3	-0.2	77	607	1025	.54	-.21	-.11

O'BRIEN'S WHISKY

75%
10 908 W

DOUBLE PLD/R/W

4-15-09
NXM1955701

NO. **29**

WULFS
KLAYTON

WULFS
HARD-CORE
MISS WULFETTE

WULFS FRANCHISE 2443F
MISS WOLFETTE 1111A

WULFS EXPLOSION 0184E
MISS WOLFETTE 4145S

O'BRIEN'S
5080R

HCC BLK
MUSTANG
FOUNDATION
COW

CHR BLAC MUSTANG
3M MISS STRETCH 182U

BW	WW	YW	MA	CEM	SC	BTH	WNG	YLG	UREA	UFAT	UMF
27	39	75	15	1		76	648	1225	.52	-.16	-.07

Top 40% of breed for REA - Top 20% of Breed for year grade.

O'BRIEN'S WHEEL OF FORTUNE

75%
10 944 W

POLLED/RED

4-15-09
NXM1966967

NO. **30**

WULFS
KLAYTON

WULFS
HARD-CORE
MISS WULFETTE

WULFS FRANCHISE 2443F
MISS WOLFETTE 1111A

WULFS EXPLOSION 0184E
MISS WOLFETTE 4145S

O'BRIEN'S
2080M

WULFS
JUMP SHOT
FOUNDATION
COW

WULFS GAGE 5158G
WULFS COTTONWOOD 3519C

BW	WW	YW	MA	CEM	SC	BTH	WNG	YLG	UREA	UFAT	UMF
1.9	44	81	23	2	-0.1	80	590	1000	.46	-.12	-.10

Top 30% for YG
Top 40% for WW, YW, MA, REA

O'BRIEN'S WINTER BREEZE

75%
10 901 W

SCURRED/RED

4-20-09
NXM1955683

NO. **31**

WULFS
KLAYTON

WULFS
HARD-CORE
MISS WULFETTE

WULFS FRANCHISE 2443F
MISS WOLFETTE 1111A

WULFS EXPLOSION 0184E
MISS WOLFETTE 4145S

O'BRIEN'S
2079M

WULFS HONDA
FOUNDATION
COW

WULFS RAMBLER 8400X
MISS WULFETTE 5070E

BW	WW	YW	MA	CEM	SC	BTH	WNG	YLG	UREA	UFAT	UMF
0.8	37	71	23	3	-0.2	71	597	1275	.50	-.15	-.10

Double polled
Top 30% for birth, milk and ribeye - Top 20% for yield grade

O'BRIEN'S WILLY WONKA

88%
10 903 W

DOUBLE POLLED/RED

4-15-09
NXM1948827

NO. **32**

BR BLACK
MARK

EXLR DAKOTA
DUUG GLITTER

WULFS COUNT DOWN 9251C
CANE RIDGE DAPHNE 011D

WULFS QUARTERBACK 4222B
CL GLITTER

O'BRIEN'S
5083R

HCC BLK
MUSTANG
O'BRIEN'S 466L

CHR BLAC MUSTANG
3M MISS STRETCH 182U
WULFS HONDA 5070H

BW	WW	YW	MA	CEM	SC	BTH	WNG	YLG	UREA	UFAT	UMF
3.3	34	66	15	1	0.1	75	602	1175	.56	-.18	-.13

Double Polled

O'BRIEN'S WARREN

75%
10 935 W

DOUBLE POLLED/BLK

5-12-09
LFM1974395

NO. **33**

BR BLACK
MARK

EXLR DAKOTA
DUUG GLITTER

WULFS COUNT DOWN 9251C
CANE RIDGE DAPHNE 011D

WULFS QUARTERBACK 4222B
CL GLITTER

O'BRIEN'S
MUSTANG 2090M

HCC BLK
MUSTANG
FOUNDATION
COW

CHR BLAC MUSTANG
3M MISS STRETCH 182U

BW	WW	YW	MA	CEM	SC	BTH	WNG	YLG	UREA	UFAT	UMF
3.4	35	68	14	1	80	625	1250				

Would work on mature cows. Double Polled

O'BRIEN'S WESLEY

88%
IO 939 W

LITE SCURRED/BLK

3-15-09
NXM1974396

NO. **34**

WULFS ROUGH N READY { WULFS JOEL { WULFS GUARDIAN 5074G
MISS WULFETTE 6010F
WULFS JOY BELLS { WULFS EVAN 9052E
WULFS ENJOYABLE 5009E
O'BRIEN'S 4110P { WULFS JETHRO { TUBB GRINDER 749D
MISS WULFETTE 7209G
O'BRIENS 2010M { WULFS JUMP SHOT 3519J

BW	WW	YW	MA	CEM	SC	BTH	WNG	YLG	UREA	UFAT	UMF
1.5	41	79	30	5	0.3	80	575	1025	.35	-.12	-.06

Top 30% for CED, CEM -To 5% Milk
Should work for heifers.

O'BRIEN'S WEEKLY

88%
IO 946 W

POLLED/BLK

4-22-09
NXM1974399

NO. **35**

WULFS ROUGH N READY { WULFS JOEL { WULFS GUARDIAN 5074G
MISS WULFETTE 6010F
WULFS JOY BELLS { WULFS EVAN 9052E
WULFS ENJOYABLE 5009E
O'BRIEN'S 2031M { LFL 701G { COLE FIRST DOWN 46D
CHR COURTNEY 208C
O'BRIEN'S 319K { TUBB EIGHTBALL 693E

BW	WW	YW	MA	CEM	SC	BTH	WNG	YLG	UREA	UFAT	UMF
2.3	40	78	27	5	0.4	77	616	1125	.39	-.09	0

Top 40% of breed for milk - Top 30% of breed for CEM

O'BRIEN'S WERRINGTON

75%
IO 936 W

POLLED/BLK

5-1-09
NXM1974398

NO. **36**

BR BLACK MARK { EXLR DAKOTA { WULFS COUNT DOWN 9251C
CANE RIDGE DAPHNE 011D
DUUG GLITTER { WULFS QUARTERBACK 4222B
CL GLITTER
O'BRIEN'S 5012R { WULFS LEPRECHAN { PLND JEOPARDY 203J
WULFS JOANNA 9269J
FOUNDATION COW {

BW	WW	YW	MA	CEM	SC	BTH	WNG	YLG	UREA	UFAT	UMF
2.2	37	69	17	3	0.3	78	500	850			

Small, Lite muscled

O'BRIEN'S WHY NOT

75%
IO 934 W

DOUBLE PLD/BLK

5-1-09
LFM1974458

NO. **37**

O'BRIENS TEXAS RANGER { JCL JACK FROST { EXLR DAKOTA 353G
JCL ETERNITY
IO MISS DIAMOND 142 E { DIAMOND TIME 953Y
MS IO POLL CAT 830W
O'BRIEN'S 5016L { WULFS LEPRECHAN { PLND JEOPARDY 203J
WULFS JOANNA 9269J
FOUNDATION COW {

BW	WW	YW	MA	CEM	SC	BTH	WNG	YLG	UREA	UFAT	UMF
0.1	31	61	18	4		78	601	1100			

Double polled. Top 40% for CED and CEM - Top 30% for BW
Should work on heifers



FALL YEARLINGS

O'BRIEN'S WRANGLER

88% DOUBLE PLD/BLK 8-17-09
 10 1927 W NXM1974460

NO. **38**

JCL JACK FROST { EXLR DAKOTA { WULFS COUNT DOWN 9251C
 { JCL ETERNITY { CANE RIDGE DAPHNE 011D
 { JCL BLACK OUT
 { ROKR DIAMONDS ARE FOREVER

O'BRIEN'S 4122P { LFL 701G { COLE FIRST DOWN 46D
 { O'BRIEN'S MUSTANGS 2093M { CHR COURTNEY 208C
 { HCC BLK MUSTANG 432D

BW	WW	YW	MA	CEM	SC	BTH	WNG	YLG	UREA	UFAT	UMF
4.0	49	86	19	1	0.4	80	648	1217	.40	-.13	-.09

Double polled
 Top 30% in YW, YG - Top 20% in WW
 Would work well on mature cows. This Dam is a good one.

O'BRIEN'S WIMPLE

94% DOUBLE PLD/BLK 11-20-09
 10 1916 W NXM1974446

NO. **40**

O'BRIEN'S TEXAS RANGER { JCL JACK FROST { EXLR DAKOTA 353G
 { IO MISS DIAMOND 142E { JCL ETERNITY
 { DIAMOND TIME 953Y
 { MS IO POLL CAT 830W

O'BRIEN'S 6514S { LFL 701G { COLE FIRST DOWN 46D
 { O'BRIEN'S 4112P { CHR COURTNEY 208C

BW	WW	YW	MA	CEM	SC	BTH	WNG	YLG	UREA	UFAT	UMF
1.7	33	64	21	4	.25	75	610	1267	.33	-.13	-.05

Double Polled - Top 20% in YG
 Could be used on heifers

O'BRIEN'S WONDER BREAD

50% POLLED/B/W 10-27-09
 10 1902 W NXM1974557

NO. **42**

WULFS LEPRECHAN { PLND JEOPARDY { WULFS GUARDIAN 5074G
 { WULFS JOANNA { PLND GRETA 144G
 { WULFS QUARTERBACK 4222B
 { WULFS EDINA 9053X

FC 723 (BLACK) {

BW	WW	YW	MA	CEM	SC	BTH	WNG	YLG	UREA	UFAT	UMF
						74	573	1125			

O'BRIEN'S WEARWOLF

100% HORNED/BLK 9-1-09
 10 1912 W NPM1975349

NO. **39**

JCL JACK FROST { EXLR DAKOTA { WULFS COUNT DOWN 9251C
 { JCL ETERNITY { CANE RIDGE DAPHNE 011D
 { JCL BLACK OUT
 { ROKR DIAMONDS ARE FOREVER

PERF MISS CARRIE { CVR SIR CARMAC { LKCC TOMAHAWKS TOUCHDOWN
 { MISS GENNY BLACK { CVR QUEEN HANSOM 404W
 { GENERAL LEE LOJW 40S
 { PERF 524T

BW	WW	YW	MA	CEM	SC	BTH	WNG	YLG	UREA	UFAT	UMF
3.4	49	85	21	-1	0.5	75	675	1311	.34	-.14	-.12

Top 40% in YW - Top 30% in WW and SC
 Top 20% in YG

O'BRIEN'S WEDNESDAY

88% HORNED/DOUBLE BLK 10-10-09
 10 1925 W NXM1974412

NO. **41**

KING WULF 2003P { WULFS MONEYBAGS { WULFS FANFARE 4055F
 { WULFS MANAGEMENT { WULFS 24 KARAT GOLD 003K
 { WULFS POLLED PROGRESS
 { WULFS KONCORDIA 0081K

O'BRIEN'S 5065R { WULFS JETHRO { TUBB GRINDER 749D
 { O'BRIEN'S 312K { MISS WULFETTE 7209G
 { MAGBYS FIRST QUARTER

BW	WW	YW	MA	CEM	SC	BTH	WNG	YLG	UREA	UFAT	UMF
0.1	30	67	25	5	0.2	80	650	1182	.24	-.15	-.12

Double blk, both parents polled

O'BRIEN'S WESTERN HAULER

75% POLLED/BLK 11-13-09
 IO 1920 W NXM1974550 NO. **43**

O'BRIEN'S TEXAS RANGER { JCL JACK FROST { EXLR DAKOTA 353G
 JCL ETERNITY
 IO MISS DIAMOND 142E { DIAMOND TIME 953Y
 MS IO POLL CAT 830W

O'BRIEN'S 6504S { JCL COUNTRY BOY { DVFC COOKIE MONSTER 108H
 JCL MIRA
 FOUNDATION COW {

BW	WW	YW	MA	CEM	SC	BTH	WNG	YLG	UREA	UFAT	UMF
2.9	36	67	20	5	.10	77	603	1126	.36	-.14	-.09

Top 30% for CEM - Top 20% for YG

O'BRIEN'S WAFFLE

88% POLLED/BLK 11-5-09
 IO 1922 W NXM1974447 NO. **44**

O'BRIEN'S TEXAS RANGER { JCL JACK FROST { EXLR DAKOTA 353G
 JCL ETERNITY
 IO MISS DIAMOND 142E { DIAMOND TIME 953Y
 MS IO POLL CAT 830W

O'BRIEN'S 2034M { WUFLS JETHRO { TUBB GRINDER 749D
 MISS WULFETTE 7209G
 O'BRIEN'S 303K { ROUSSEAU

BW	WW	YW	MA	CEM	SC	BTH	WNG	YLG	UREA	UFAT	UMF
1.2	33	65	22	4	.2	75	550	1232	.21	-.15	-.10

Top 40% in CED, BW and CEM - Top 20% in YG
 Could be used on heifers

O'BRIEN'S WISHING WELL

POLLED/BLK 10-15-09
 IO 1901 W NO. **45**

WULFS LEPRECHAUN { PLND JEOPARDY { WULFS GUARDIAN 5074G
 PLND GRETA 144G
 WULFS JOANNA { WULFS QUARTERBACK 4222B
 WULFS EDINA 9053X

O'BRIEN'S 704 {

BW	WW	YW	MA	CEM	SC	BTH	WNG	YLG	UREA	UFAT	UMF
						75	600	1070			

Not a registered bull. Sells as commercial with a pedigree.

O'BRIEN'S WESTMINSTER

50% HORNED/BLK 10-1-09
 IO 1900 W NXM1974558 NO. **46**

WULFS LEPRECHAUN { PLND JEOPARDY { WULFS GUARDIAN 5074G
 PLND GRETA 144G
 WULFS JOANNA { WULFS QUARTERBACK 4222B
 WULFS EDINA 9053X

FOUNDATION COW 703 {

BW	WW	YW	MA	CEM	SC	BTH	WNG	YLG	UREA	UFAT	UMF
						77	623	1274			

Should work well on first calf heifers

O'BRIEN'S WHISTLE

75% SCURRED/BLK 11-27-09
 IO 1911 W LFM1974472 NO. **47**

JCL JACK FROST { EXLR DAKOTA { WULFS COUNT DOWN 9251C
 CANE RIDGE DAPHNE 011D
 JCL ETERNITY { JCL BLACK OUT
 ROKR DIAMONDS ARE FOREVER

O'BRIEN'S MUSTANGS 2088M { HCC BLK MUSTANG { CHR BLAC MUSTANG
 3M MISS STRETCH 182U
 FOUNDATION COW {

BW	WW	YW	MA	CEM	SC	BTH	WNG	YLG	UREA	UFAT	UMF
3.1	43	80	14	-1	0.3	80	650	1052	.42	-.14	-.09

Top 20% for yield grade - Top 40% for WW and YW

O'BRIEN'S WHY ME

100% HORNED/BLK 10-1-09
 IO 1905 W NPM1974554 NO. **48**

WULFS LEPRECHAUN { PLND JEOPARDY { WULFS GUARDIAN 5074G
 PLND GRETA 144G
 WULFS JOANNA { WULFS QUARTERBACK 4222B
 WULFS EDINA 9053X

O'BRIEN'S 7021T { GOLD STRIKE { AUTO CLIFF HANGER 194D
 OAKM LADY SANDRA 631F
 O'BRIEN'S 2104M { LFL 701G
 WULFS FLEUR 6100F

BW	WW	YW	MA	CEM	SC	BTH	WNG	YLG	UREA	UFAT	UMF
0.0	42	80	20	7	0.2	70	574	1183	.63	-.18	-.12

Top 30% in CED and BW - Top 20% in REA
 Top 10% in CEM and YG
 Out of a proven heifer bull. Can be used on heifers.

O'BRIEN'S WEBBLE WOBBLE

75% DOUBLE PLD/DOUBLE BLK 12-30-09
 IO 1917 W LFM1974466

NO. **49**

CARROUSELS PROPEL { MDRC TUBB LUCK STRIKE { TUBB GRINDER 749D EXLR 120J
 { DVFC DAWNS EARLY LITE { EXLR RESOLUTION 129J DVFC BLACK DAWN 169J
 O'BRIEN'S 2052M { MAGBYS FIRST QUARTER { WULFS QUARTEBACK 4222B E-LEXIS
 { FOUNDATION COW {

BW	WW	YW	MA	CEM	SC	BTH	WNG	YLG	UREA	UFAT	UMF
1.6	44	78	19	3	0.4	73	535	1050	.41	-.13	-.06

Top 50% of breed in all categories. expected yield grade 30%.
 Good chance of being homo black and homo polled.

O'BRIEN'S WORLDS OF FUN

88% POLLED/BLK 10-10-09
 IO 1907 W NXM1974552

NO. **50**

WULFS LEPRECHAUN { PLND JEOPARDY { WULFS GUARDIAN 5074G PLND GRETA 144G
 { WULFS JOANNA { WULFS QUARTERBACK 4222B
 WULFS EDINA 9053X
 O'BRIEN'S 7047T { JCL JACK FROST { EXLR DAKOTA 353G JCL ETERNITY
 { O'BRIEN'S 5012R { WULFS LEPRECHAN 9269L

BW	WW	YW	MA	CEM	SC	BTH	WNG	YLG	UREA	UFAT	UMF
1.6	47	86	18	5	0.3	77	577	1132	.63	-.16	-.15

Top 30 % in WW, YW and CEM - Top 20% in REA and YG
 Sired by a proven heifer bull. Could be used on heifers.

O'BRIEN'S WILSON

100% POLLED/BLK 11-18-09
 IO 1913 W NPM1974444

NO. **51**

O'BRIENS TEXAS RANGER { JCL JACK FROST { EXLR DAKOTA 353G JCL ETERNITY
 { IO MISS DIAMOND 142E { DIAMOND TIME 953Y MS IO POLL CAT 830W
 O'BRIEN'S 2108M { OAKM LORD SATURN { OAKM LORD JUPITER 26D LAURA'S ACCENT
 { LL MISTY BELL { BACCARAT LL MISTY LADY

BW	WW	YW	MA	CEM	SC	BTH	WNG	YLG	UREA	UFAT	UMF
3.1	39	71	23	1	.2	80	600	1000	.44	-.19	-.07

Top 10% for yield grade.

O'BRIEN'S WAVERLY PLACE

75% HORNED/DOUBLE BLK 11-2-09
 IO 1921 W NXM1974463

NO. **52**

BR BLACK MARK { EXLR DAKOTA { WULFS COUNT DOWN 9251C CANE RIDGE DAPHNE 011D
 { DUUG GLITTER { WULFS QUARTERBACK 4222B CL GLITTER
 O'BRIEN'S 5518R { JCL COWBOY JUNCTION { EXLR DAKOTA 353G JCL PEPPER
 { FOUNDATION COW {

BW	WW	YW	MA	CEM	SC	BTH	WNG	YLG	UREA	UFAT	UMF
3.9	41	72	19	2	0.4	80	625	1160	.55	-.15	-.16

Double Black.
 Top 30% for REA - Top 20% for YG.

O'BRIEN'S WYMARINER

88% HORNED/BLK 12-13-09
 IO 1915 W NXM1974467

NO. **53**

JCL JACK FROST { EXLR DAKOTA { WULFS COUNT DOWN 9251C CANE RIDGE DAPHNE 011D
 { JCL ETERNITY { JCL BLACK OUT ROKR DIAMONDS ARE FOREVER
 O'BRIEN'S 4114P { WULFS JETHRO { TUBB GRINDER 749D MISS WULFETTE 7209G
 { O'BRIEN'S 2021M { WULFS JOHNNY APPLESEED

BW	WW	YW	MA	CEM	SC	BTH	WNG	YLG	UREA	UFAT	UMF
2.2	45	83	23	1	0.3	78	600	1166	.34	-.14	-.13

Top 40% in WW, YW and MA - Top 20% in YG
 This dam is one of Ropers favorites.

O'BRIEN'S WICKED

88% SCURRED/RED 9-15-09
 IO 1918 W NXM1974465

NO. **54**

JCL JACK FROST { EXLR DAKOTA { WULFS COUNT DOWN 9251C CANE RIDGE DAPHNE 011D
 { JCL ETERNITY { JCL BLACK OUT ROKR DIAMONDS ARE FOREVER
 O'BRIEN'S 2253N { LFL 701G { COLE FIRST DOWN 46D CHR COURTNEY 208C
 { O'BRIEN'S 483L { HAWS 649H

BW	WW	YW	MA	CEM	SC	BTH	WNG	YLG	UREA	UFAT	UMF
3.1	50	87	23	2	0.5	75	650	1305	.30	-.11	-.07

Top 20% of breed for WW
 Top 30% of Breed for YW, MA and Yield grade

O'BRIEN'S WHERE R YOU

100% HORNED/RED 10-7-09 NPM1974551 NO. 55
 IO 1908 W

- WULFS LEPRECHAUN { PLND JEOPARDY { WULFS GUARDIAN 5074G
PLND GRETA 144G
- WULFS JOANNA { WULFS QUARTERBACK 4222B
WULFS EDINA 9053X
- O'BRIEN'S 7046T { TRTF JCL REDFORD { EXLR DAKOTA 353G
LOGANS MAGIC MARY
- O'BRIEN'S 5096R { YKCC POLLED TANGO 559Y
IO MS 649D

BW	WW	YW	MA	CEM	SC	BTH	WNG	YLG	UREA	UFAT	UMF
1.5	45	78	18	6	0.2	75	600	1150	.61	-.17	-.15

Top 40% in CED, BW and WW - Top 20% in CEM, REA and YG
 Sired by Wulfs Leprechaun a first class heifer bull. Could be used on heifers.

O'BRIEN'S WILLIS

75% HORNED/RED 12-1-09 NXM1974413 NO. 56
 IO 1926 W

- KING WULF 2003P { WULFS MONEYBAGS { WULFS FANFARE 4055F
WULFS 24 KARAT GOLD 003K
- WULFS MANAGEMENT { WULFS POLLED PROGRESS
WULFS KONCORDIA 0081K
- O'BRIEN'S 5070R { WUFLS JETHRO { TUBB GRINDER 749D
MISS WULFETTE 7209G
- FOUNDATION COW {

BW	WW	YW	MA	CEM	SC	BTH	WNG	YLG	UREA	UFAT	UMF
0.1	30	65	24	24	4	82	646	1315	.14	-.13	-.10

Top 30% of breed for BW, MA and Yield Grade
 Top 40% of breed for CED and CEM.

O'BRIEN'S WHISKEY RIVER

88% DOUBLE PLD/RED 12-1-09 NXM1974555 NO. 57
 IO 1904 W

- WULFS LEPRECHAUN { PLND JEOPARDY { WULFS GUARDIAN 5074G
PLND GRETA 144G
- WULFS JOANNA { WULFS QUARTERBACK 4222B
WULFS EDINA 9053X
- O'BRIEN'S 7110T { JCL COUNTRY BOY { DVFC COOKIE MONSTER 108H
JCL MIRA
- O'BRIEN'S 5016R { WULFS LEPRECHAN 9269L

BW	WW	YW	MA	CEM	SC	BTH	WNG	YLG	UREA	UFAT	UMF
0.6	39	75	19	8		78	521	1075	.65	-.16	-.14

Out of a heifer bull deluxe.
 Top 30% in BW - Top 20% in CED, REA and YG - Top 10% in CEM.
 Double Polled, work on heifers.

O'BRIEN'S WONDER BOY

100% POLLED/BLK 12-15-09 NPM1974556 NO. 58
 IO 1903 W

- WULFS LEPRECHAUN { PLND JEOPARDY { WULFS GUARDIAN 5074G
PLND GRETA 144G
- WULFS JOANNA { WULFS QUARTERBACK 4222B
WULFS EDINA 9053X
- O'BRIEN'S 7088T { JCL COUNTRY BOY { DVFC COOKIE MONSTER 108H
JCL MIRA
- NEO ANGIE { BLACK GOLD
GV PERFECTION LADY 827W

BW	WW	YW	MA	CEM	SC	BTH	WNG	YLG	UREA	UFAT	UMF
0.4	43	78	78	8	0.2	73	519	1030	.54	-.14	-.11

Strong cow family and out of a heifer bull deluxe.
 Top 30% in CED, BW and REA - Top 20% YG - Top 10% CEM.
 Will work on heifers.

O'BRIEN'S WYLIE

88% DOUBLE PLD/BLK 10-13-09 NXM1974512 NO. 59
 IO 1909 W

- WULFS LEPRECHAUN { PLND JEOPARDY { WULFS GUARDIAN 5074G
PLND GRETA 144G
- WULFS JOANNA { WULFS QUARTERBACK 4222B
WULFS EDINA 9053X
- O'BRIEN'S 7005T { JCL WULF HUNT { COLE WULF HUNT
ZEBO BLACK POLL QUEEN380N
- O'BRIEN'S 5063R { WULFS JETHRO 7209J

BW	WW	YW	MA	CEM	SC	BTH	WNG	YLG	UREA	UFAT	UMF
1.3	43	80	19	7		77	575	1015	.58	-.16	-.12

Top 20% of breed for CED, REA and Yield Grade - To 10% of breed for CEM.
 Top 40% of Breed for BWA, WW and YW.

O'BRIEN'S WICKED WATHER

100% DOUBLE PLD/BLK 11-02-09 NPM1974553 NO. 60
 IO 1906 W

- WULFS LEPRECHAUN { PLND JEOPARDY { WULFS GUARDIAN 5074G
PLND GRETA 144G
- WULFS JOANNA { WULFS QUARTERBACK 4222B
WULFS EDINA 9053X
- O'BRIEN'S 7527T { GOLD STRIKE { AUTO CLIFF HANGER 194D
OAKM LADY SANDRA 631F
- LL BLACK BELL { IBRR BLACK SHADOW
LL LADY BELL

BW	WW	YW	MA	CEM	SC	BTH	WNG	YLG	UREA	UFAT	UMF
0.9	45	80	20	5	0.2	70	553	1000	.68	-.19	-.12

Top 40% in CED and WW - Top 30% in BW and CEM - Top 20% in REA - Top 10% in YG.
 Sired by a proven heifer bull. Double Polled. Use on Heifers.

SPRING ANGUS YEARLINGS

O'BRIEN'S XTENDED HOURS

97X ANGUS 4-4-10
AAA1684833

NO. 62

G A R YIELD GRADE { G A R PRECISION 1680 } TEHAMA BANDO 155
9J9 G A R 856
G A R EXT 4526 { N BAR EMULATION EXT
G A R 6807 TRAVELER 93

PAA ELBERTRESS G75 { BON VIEW NEW DESIGN 878 } B/R NEW DESIGN 036
BON VIEW GAMMER 85
PAA ELBERTRESS 816 { PAA 4075 NAV IMPACT 7142
PAA ELBERTRESS 8539

BW	WW	YW	MA	CEM	SC	BTH	WNG	YLG	UREA	UFAT	UMF
+2.4	+42	+89	+22	+9		60	587				

O'BRIEN'S XPLOSIVE APPEAL

94X ANGUS 3-8-10
AAA16848836

NO. 63

G A R YIELD GRADE { G A R PRECISION 1680 } TEHAMA BANDO 155
9J9 G A R 856
G A R EXT 4526 { N BAR EMULATION EXT
G A R 6807 TRAVELER 93

MB PRIDE 3124 { SUMMITCREST HIGH PRIMEOH29 } GARDENS PRIME TIME
SUMMITCREST MISSIE 2F55
MB HYLINE PRIDE 9094 { OCC EMULATE 706E
MB HYLINE PRIDE 3011

BW	WW	YW	MA	CEM	SC	BTH	WNG	YLG	UREA	UFAT	UMF
+1.5	39	77	+20	+9		54	526				

O'BRIEN'S XTERNAL HARD DRIVE

98X ANGUS 4-10-10
AAA16844195

NO. 64

RR CORKS TRAV 004 { S A V 8180 TRAVELER } SITZ TRAVELER 8180
BOYD FOREVER LADY 8003
CORKS ELGA ERICA { TWIN VALLEY PRECISION E161
CORKS ELGA ERICA 8104

OAK FRONT ERICA ANN 14 { N BAR PRIME RATE } GARDENS PRIME TIME
N BAR ENCHANTRESS T330
OAK FRONT ERICA ANN 62 { DIAMOND AMBUSH 866K
OAK FRONT ERICA ANN A458

BW	WW	YW	MA	CEM	SC	BTH	WNG	YLG	UREA	UFAT	UMF
2.7	+43	80	+23	9		50	596				



SPRING LIMOUSIN YEARLINGS

O'BRIEN'S XPLAIN

100% DOUBLE PLD/DOUBLE BLK 3-3-10
IO 0726 X NPM1974754

NO. **65**

WULFS KLAYTON { WULFS HARD-CORE { WULFS FRANCHISE 2443F
MISS WOLFETTE 1111A
MISS WOLFETTE { WULFS EXPLOSION 0184E
MISS WOLFETTE 4145S

O'BRIEN'S LUCITA { WULFS JUMP SHOT { WULFS GAGE 5158G
WULFS COTTONWOOD 3519C
IO MS TANGO 613D { YKCC POLLED TANGO 559Y
MS IO CHECKMATE 046Y

BW	WW	YW	MA	CEM	SC	BTH	WNG	YLG	UREA	UFAT	UMF
2.2	41	76	23	2	-.01	78	730		.60	-.14	-.12

Xplain is a real cool double blk, double polled bull out of the Lucita cow that won Ashton lots of first place ribbons.
Top 20% for REA and YHG - Top 40% for milk.

O'BRIEN'S XTENSION

88% HORNED/DOUBLE BLK 5-7-10
IO 0712 X NXM1974749

NO. **66**

BR BLACK MARK { EXLR DAKOTA { WULFS COUNT DOWN 9251C
CANE RIDGE DAPHNE 011D
DUUG GLITTER { WULFS QUARTERBACK 4222B
CL GLITTER

O'BRIEN'S 4104P { LFL 701G { COLE FIRST DOWN 46D
CHR COURTNEY 208C
O'BRIENS 2029M { WULFS JETHRO 7209J
FC

BW	WW	YW	MA	CEM	SC	BTH	WNG	YLG	UREA	UFAT	UMF
3.5	37	70	20	4	0.3	76	645		.45	-.14	-.12

Double blk. Real good cow side pedigree.

O'BRIEN'S XXX

88% POLLED/BLK 3-2-10
IO 0722 X NXM1974604

NO. **67**

WULFS ROUGH N READY { WULFS JOEL { WULFS GUARDIAN 5074G
MISS WOLFETTE 6010F
WULFS JOY BELLS { WULFS EVAN 9052E
WULFS ENJOYABLE 5009E

O'BRIEN'S 4109P { LFL 701G { COLE FIRST DOWN 46D
CHR COURTNEY 208C
O'BRIEN'S MUSTANGS 2088M { HCC BLK MUSTANG 432D
FC

BW	WW	YW	MA	CEM	SC	BTH	WNG	YLG	UREA	UFAT	UMF
2.2	40	78	29	4	0.4	74	710		.44	-.10	-.01

Top 5% of breed milk - Top 30% for YG - Top 40% for CEM

O'BRIEN'S XOXO

94% SCURRED/DOUBLE BLK 3-15-10
IO 0705 X NPM1974419

NO. **68**

LFL 701G { COLE FIRST DOWN { LKCC TOMAHAWKS TOUCHDOWN
2 155P
CHR COURTNEY { YKCC TOP LINE 180X
CHR SWEET SIXTEEN

O'BRIEN'S SKYLAR { WULFS JETHRO { TUBB GRINDER 749D
MISS WOLFETTE 7209G
EXLR QUEEN 7783M { EXLR RIGHT ON TIME 106J
EXLR QUEEN 146K

BW	WW	YW	MA	CEM	SC	BTH	WNG	YLG	UREA	UFAT	UMF
0.4	37	72	24	6	0.3	65	650		.22	.01	-.03

Talk about calving ease and double blk. Nice bull that should work great on first calf heifers.

O'BRIEN'S XPRESSO

75% POLLED/DOUBLE BLK 5-7-10
IO 0724 X NXM1974752

NO. **69**

BR BLACK MARK { EXLR DAKOTA { WULFS COUNT DOWN 9251C
CANE RIDGE DAPHNE 011D
DUUG GLITTER { WULFS QUARTERBACK 4222B
CL GLITTER

O'BRIEN'S 4128P { JCL COUNTRY BOY { DVFC COOKIE MONSTER 108H
JCL MIRA
FOUNDATION COW {

BW	WW	YW	MA	CEM	SC	BTH	WNG	YLG	UREA	UFAT	UMF
3.3	36	66	20	3	0.2	80	670		.49	-.17	-.11

Nice double blk bull. Should work great on cows

O'BRIEN'S XARLES

75%
10 0713 X

HORNED/BLK

4-20-10
LFM1974589

NO. **70**

WULFS ROUGH N READY { WULFS JOEL { WULFS GUARDIAN 5074G
MISS WULFETTE 6010F
WULFS JOY BELLS { WULFS EVAN 9052E
WULFS ENJOYABLE 5009E

O'BRIEN'S 461L { ROUSSEAU { DANDIN-C
ETOURDIE
FOUNDATION COW {

BW	WW	YW	MA	CEM	SC	BTH	WNG	YLG	UREA	UFAT	UMF
0.6	31	64	29	5	0.3	76	632		.31	-.12	-.02

Xarles has a cool Pedigree he goes back to Rousseau on this dam side.
Top 5% for milk - Top 20% YG
Top 30% BW and CEM - Top 40% CED

O'BRIEN'S XHUSBAND

75%
10 0728 X

SCURRED/RED

4-5-10
NXM1974608

NO. **72**

WULFS ROUGH N READY { WULFS JOEL { WULFS GUARDIAN 5074G
MISS WULFETTE 6010F
WULFS JOY BELLS { WULFS EVAN 9052E
WULFS ENJOYABLE 5009E

O'BRIEN'S 5522R { JCL COWBOY
JUNCTION { EXLR DAKOTA 353G
JCL PEPPER
FOUNDATION COW {

BW	WW	YW	MA	CEM	SC	BTH	WNG	YLG	UREA	UFAT	UMF
2.2	44	80	30	4		76	630		.35	-.09	-.03

Top 5% of breed for milk - Top 40% of breed for WW and YG.

O'BRIEN'S XENEROSO

88%
10 0718 X

HORNED/RED

3-1-10
NXM1974592

NO. **74**

WULFS ROUGH N READY { WULFS JOEL { WULFS GUARDIAN 5074G
MISS WULFETTE 6010F
WULFS JOY BELLS { WULFS EVAN 9052E
WULFS ENJOYABLE 5009E

O'BRIEN'S 5066R { WULFS JETHRO { TUBB GRINDER 749D
MISS WULFETTE 7209G
O'BRIEN'S 316K { MAGBYS FIRST QUARTER

BW	WW	YW	MA	CEM	SC	BTH	WNG	YLG	UREA	UFAT	UMF
2.3	45	85	29	5	0.3	73	750		.29	-.12	-.05

Xeneroso is in top 5% of breed for milk
Top 30% of Breed for YW, CEM and Yield Grade
Top 40% for CEM and WW.

O'BRIEN'S XABAT

88%
10 0711 X

HORNED/RED

2-5-10
NXM1974421

NO. **71**

O'BRIEN'S RESTAURANT { GOLD STRIKE { AUTO CLIFF HANGER 194D
OAKM LADY SANDRA 631F
O'BRIEN'S 2017M { LFL 701G

NEO ANGIE { BLACK GOLD { LVLS POLLED BLACK JACK
LL GOLDIE
GV PERFECTION LADY { GV POLLED PERFECTION
DONALANN GRAND LORI

BW	WW	YW	MA	CEM	SC	BTH	WNG	YLG	UREA	UFAT	UMF
1.1	40	70	21	3	0.3	75	775				

Great Dam.

O'BRIEN'S XANTHUS

100%
10 0717 X

HORNED/RED

3-11-10
NPM1974591

NO. **73**

WULFS ROUGH N READY { WULFS JOEL { WULFS GUARDIAN 5074G
MISS WULFETTE 6010F
WULFS JOY BELLS { WULFS EVAN 9052E
WULFS ENJOYABLE 5009E

FLYING E AMELIA GLER 106J { FLYING E PILOT
GLER { MASTER BRUN WOLF GANG 178
FLYINGE MITEEMITEGLER454C
POLLED DELTA BONNIE { RNS POLLED DELTA 908X
POLLED PACK BEAUTY

BW	WW	YW	MA	CEM	SC	BTH	WNG	YLG	UREA	UFAT	UMF
3.4	47	80	34	6	0.5	77	680		.34	-.12	-.03

Xanthus is in top 1% of the breed for milk
Top 20% for CEM and Yield Grade
and Top 30% for WW.

O'BRIEN'S XYZ

88%
10 0747 X

HORNED/DOUBLE BLK

5-1-10
NPM1974553

NO. **75**

WULFS KLAYTON { WULFS HARD-CORE { WULFS FRANCHISE 2443F
MISS WULFETTE 1111A
MISS WULFETTE { WULFS EXPLOSION 0184E
MISS WULFETTE 4145S

O'BRIEN'S 5062R { WULFS JETHRO { TUBB GRINDER 749D
MISS WULFETTE 7209G
O'BRIEN'S 347K { LFL 701G

BW	WW	YW	MA	CEM	SC	BTH	WNG	YLG	UREA	UFAT	UMF
1.7	38	77	19	5	-0.2	75	625		.41	-.17	-.11

Top 10% for YG - Top 30% Cem - Top 40% CED.

O'BRIEN'S XEROX

100%
IO 0744 X

SCURRED/BLK

3-5-10
NPM1974615



WULFS
ROUGH N
READY

WULFS JOEL
WULFS JOY
BELLS

WULFS GUARDIAN 5074G
MISS WULFETTE 6010F
WULFS EVAN 9052E
WULFS ENJOYABLE 5009E

O'BRIEN'S
502L

WULFS JOHNNY
APPLESEED
LA BLACK ROSE

WULFS GAGE 5158G
WULFS LADY 2048B
IBRR BLACK SHADOW
DBRO PRIMROSE 075W

BW	WW	YW	MA	CEM	SC	BTH	WNG	YLG	UREA	UFAT	UMF
2.0	43	81	28	1	0.5	70	747		.51	-.07	-.06

Top 10% for milk - Top 40% for YW - Top 30% for REA.
Dam is a great cow.

O'BRIEN'S KEYED

75%
IO 0741 X

HORNED/DOUBLE BLK

2-15-10
NXM1974775



O'BRIEN'S
RESTAURANT

GOLD STRIKE
O'BRIENS 2017M

AUTO CLIFF HANGER 194D
OAKM LADY SANDRA 631F

LFL 701G

O'BRIEN'S
7027R

JCL COUNTRY
BOY
O'BRIEN'S 494L

DVFC COOKIE MONSTER 108H
JCL MIRA

WULFS FITZGERALD 3728F

BW	WW	YW	MA	CEM	SC	BTH	WNG	YLG	UREA	UFAT	UMF
2.5	36	65	19	4	0.1	78	650		.41	-.12	-.08

Double Black - Top 40% in CEM - Top 30% in YG.

O'BRIEN'S EX

75%
IO 0703 X

HORNED/DOUBLE BLK

3-10-10
NXM1974417



LFL 701G

COLE FIRST
DOWN
CHR COURTNEY

LKCC TOMAHAWKS TOUCHDOWN
2155P
YKCC TOP LINE 180X
CHR SWEET SIXTTEN

O'BRIEN'S
4116P

WULFS JETHRO
O'BRIENS 2001M

TUBB GRINDER 749D
MISS WULFETTE 7209G
WULFS JUMP SHOT 3519J

BW	WW	YW	MA	CEM	SC	BTH	WNG	YLG	UREA	UFAT	UMF
2.4	39	75	23	6	0.2	79	675		.27	-.06	-.06

Top of breed for CEM - Top 40% of breed for CED and milk.
Double blk nice bull. Sire is 14 years old and getting good calves.

O'BRIEN'S XENOBIA

75%
IO 0720 X

HORNED/RED

4-27-10
NXM1974597



WULFS
ROUGH N
READY

WULFS JOEL
WULFS JOY
BELLS

WULFS GUARDIAN 5074G
MISS WULFETTE 6010F
WULFS EVAN 9052E
WULFS ENJOYABLE 5009E

O'BRIEN'S
5012R

WULFS
LEPRECHAN
FOUNDATION
COW

PLND JEOPARDY 203J
WULFS JOANNA 9269J

BW	WW	YW	MA	CEM	SC	BTH	WNG	YLG	UREA	UFAT	UMF
0.7	42	79	28	5	0.4	73	670		.44	-.11	-.04

Top 10% of breed for milk - top 30% for BW, CEM and YG.
Top 40% for CED and REA.

O'BRIEN'S XCELLENT

94%
IO 0704

SCURRED/RED

3-17-10
NPM1974418



LFL 701G

COLE FIRST
DOWN
CHR COURTNEY

LKCC TOMAHAWKS TOUCHDOWN
2155P
YKCC TOP LINE 180X
CHR SWEET SIXTTEN

O'BRIEN'S
4126P

LFL 701G
O'BRIENS 2022M

COLE FIRST DOWN 46D
CHR COURTNEY 208C
WULFS JETHRO 7209J
O'BRIEN'S 348K

BW	WW	YW	MA	CEM	SC	BTH	WNG	YLG	UREA	UFAT	UMF
1.3	37	72	22	7	0.3	70	700		.32	-.05	-.02

Top 10% of breed for CEM - Top 40% of breed for CED, BW and Milk. Dam Is a red WF cow that is a good one. Line Bred. This bull should work well on hieifers.

O'BRIEN'S XOXO

88%
IO 0721 X

HORNED/RED

3-9-10
NXM1974600



WULFS
ROUGH N
READY

WULFS JOEL
WULFS JOY
BELLS

WULFS GUARDIAN 5074G
MISS WULFETTE 6010F
WULFS EVAN 9052E
WULFS ENJOYABLE 5009E

O'BRIEN'S
4103P

WULFS JETHRO
O'BRIEN'S 2007M

TUBB GRINDER 749D
MISS WULFETTE 7209G
WULFS JUMP SHOT 3519J

BW	WW	YW	MA	CEM	SC	BTH	WNG	YLG	UREA	UFAT	UMF
1.0	43	82	29	4	0.3	65	680		.30	-.10	-.05

Top 10% of breed for milk - Top 30% for BW and YG
Top 40% for WW, YW and CEM.

O'BRIEN'S XRAY VISION

75%
IO 0732 X

POLLED/RW

5-10-10
NXM1974610

NO. 82

WULFS
ROUGH N
READY

WULFS JOEL
WULFS JOY
BELLS

WULFS GUARDIAN 5074G
MISS WULFETTE 6010F

WULFS EVAN 9052E
WULFS ENJOYABLE 5009E

O'BRIEN'S
4141P

JCL COUNTRY
BOY
FOUNDATION
COW

DVFC COOKIE MONSTER 108H
JCL MIRA



BW	WW	YW	MA	CEM	SC	BTH	WNG	YLG	UREA	UFAT	UMF
2.6	40	74	28	5	0.3	80	650		.32	-.08	-.02

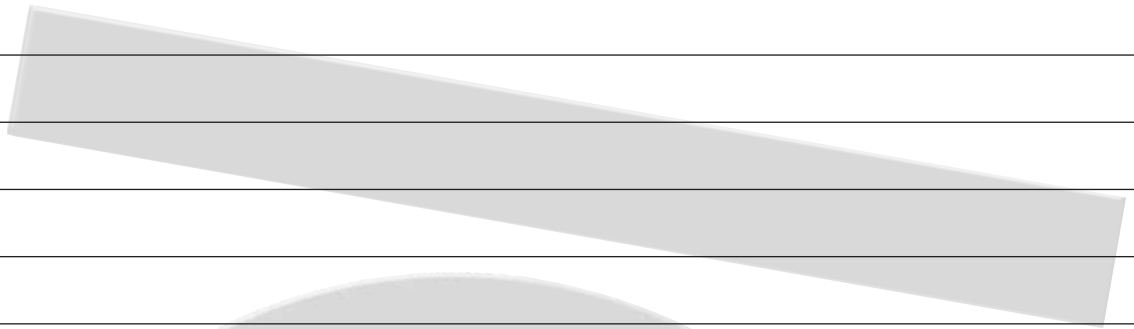
Real cool red wf bull. Dam is a blk wf cow that has done a terrific job for us. He is in Top 105 of breed for milk and Top 30% for CEM.



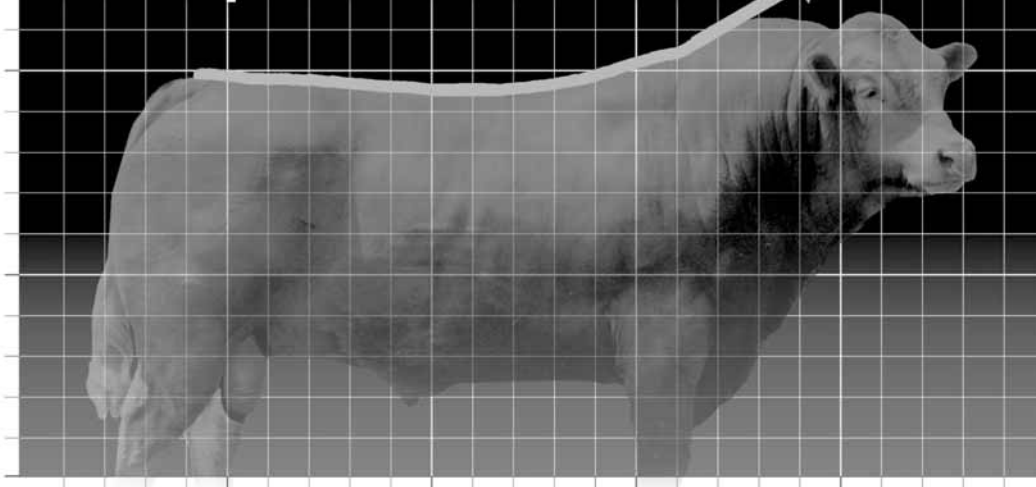
NALF PERCENTILE BREAKDOWN • 2008-2010 BORN CALVES

Upper Percentile Group	Calving Ease Direc	Birth Weight	Weaning Weight	Yearling Weight	Milking Ability	Calving Ease Maternal	Scrotal Circum.	Stayability	Docility	Carcass Weight	Ribeye Area	Yield Grade	Marbling Score	MTI
1%	19	-3.3	63	113	34	11	1.1	26	33	52	0.89	-0.25	0.50	61
2%	17	-2.6	61	109	33	10	1.0	25	31	48	0.84	-0.23	0.42	59
3%	16	-23	59	107	32	9	0.9	24 3	0	45	0.81	-0.22	0.39	57
4%	15	-2.0	58	105	31	9	0.9	24	29	43	0.79	-0.21	0.35	55,
5%	15	-1.8	57	103	30	9	0.9	23	28	42	0.77	-0.20	0.32	54
10%	13	-1.0	54	98	28	7	0.8	22	26	37	0.71	-0.18	0.22	51
20%	11	-0.1	50	92	26	6	0.6	21	22	31	0.62	-0.14	0.09	48
30%	9	0.6	47	87	24	5	0.5	20	19	27	0.55	-0.11	0.04	46
40%	8	1.2	45	83	23	4	0.4	18	17	23	0.49	-0.09	0.00	45
50%	7	1.6	42	80	21	3	0.4	17	15	20	0.42	-0.06	-0.02	44
60%	6	2.1	41	76	20	2	0.3	16	13	16	0.36	-0.02	-0.05	43
70%	6	2.5	38	73	19	2	0.2	15	11	13	0.27	0.02	-0.07	42
80%	5	3.0	36	69	17	1	0.1	14	9	9	0.13	0.10	-0.09	40
90%	3	3.8	32	64	15	0	0.0	13	6	3	-0.06	0.22	-0.12	39

NOTES



Our topline does more...



...for your bottom line.

There's a lot more that comes with our famous topline than meets the eye. With the latest advances in Limousin genetics, you can make sure it all adds up for you.

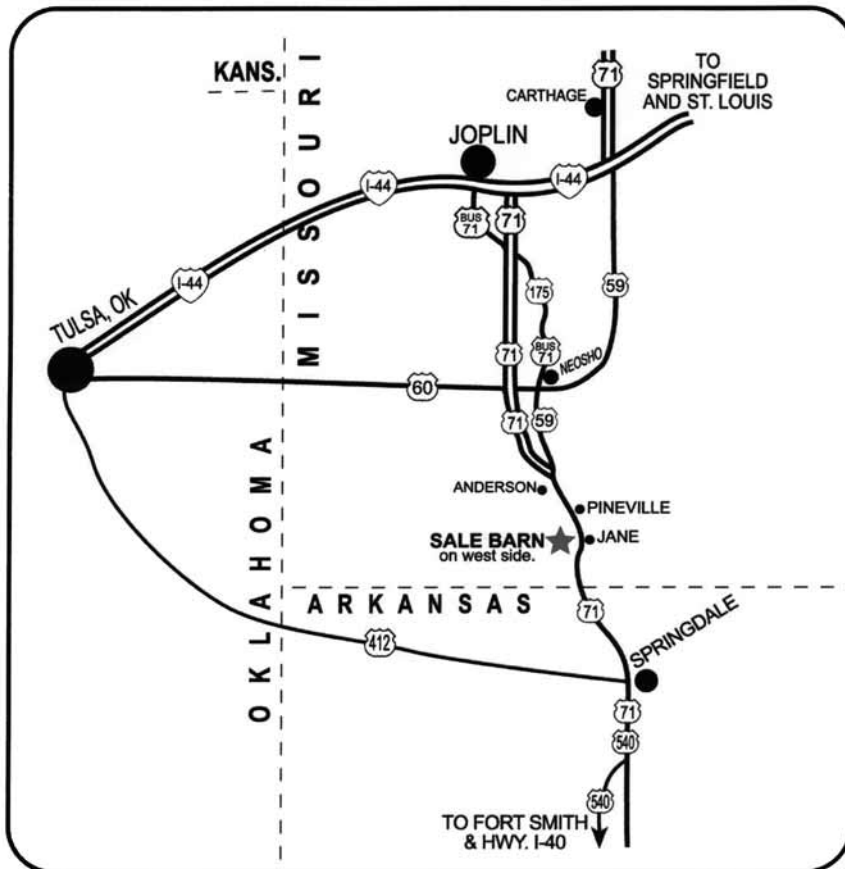
- + Easy calving and handling
- + Naturally efficient growth and carcass yield
- + Enhanced quality and yield grades
- + Increased bull and female longevity
- + More market options through natural brands and mainstream grids

Do the math for your operation—then beef up your bottom line with Limousin.

Today's Limousin. Your best cross for profit.



Learn more and locate your area Limousin breeders at www.TodaysLimousin.com or call 303-220-1693.





Registered Quarter Horses • Limousin Cattle
O'BRIEN
FARMS
P.O. Box 734 • Pineville, MO 64856